

# REDETERMINATION OF BENEFITS

## SAUK RIVER WATERSHED DISTRICT—STEARNS COUNTY DITCH 26

### BENEFIT TO LAND

#### AREA NO. 1

DIRECT BENEFITS  
 \$420.00/ACRE – CLASS A (CROPLAND)  
 \$315.00/ACRE – CLASS B (GRASSLAND/PASTURE)  
 \$200.00/ACRE – CLASS C (WETLANDS CONVERTED)  
 INDIRECT BENEFITS  
 \$ 30.00/ACRE – CLASS D (CROPLAND)  
 \$ 30.00/ACRE – CLASS E (WETLANDS CONVERTED)  
 \$ 35.00/ACRE – CLASS F (COMMERCIAL/RESIDENCIAL)  
 \$ 26.00/ACRE – CLASS G (GRASSLAND/PASTURE)

#### AREA NO. 2

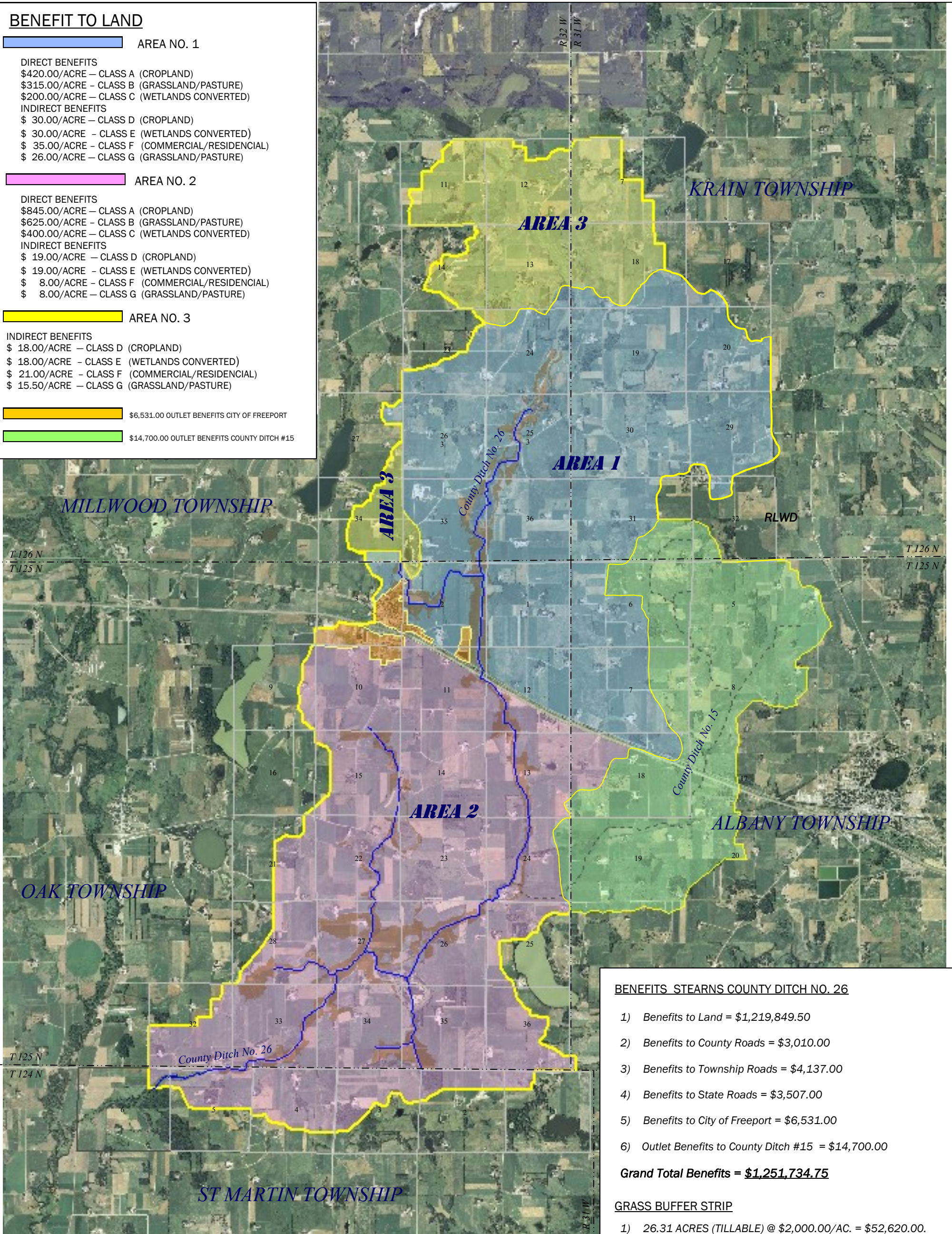
DIRECT BENEFITS  
 \$845.00/ACRE – CLASS A (CROPLAND)  
 \$625.00/ACRE – CLASS B (GRASSLAND/PASTURE)  
 \$400.00/ACRE – CLASS C (WETLANDS CONVERTED)  
 INDIRECT BENEFITS  
 \$ 19.00/ACRE – CLASS D (CROPLAND)  
 \$ 19.00/ACRE – CLASS E (WETLANDS CONVERTED)  
 \$ 8.00/ACRE – CLASS F (COMMERCIAL/RESIDENCIAL)  
 \$ 8.00/ACRE – CLASS G (GRASSLAND/PASTURE)

#### AREA NO. 3

INDIRECT BENEFITS  
 \$ 18.00/ACRE – CLASS D (CROPLAND)  
 \$ 18.00/ACRE – CLASS E (WETLANDS CONVERTED)  
 \$ 21.00/ACRE – CLASS F (COMMERCIAL/RESIDENCIAL)  
 \$ 15.50/ACRE – CLASS G (GRASSLAND/PASTURE)

\$6,531.00 OUTLET BENEFITS CITY OF FREEPORT

\$14,700.00 OUTLET BENEFITS COUNTY DITCH #15



### BENEFITS STEARNS COUNTY DITCH NO. 26

- 1) Benefits to Land = \$1,219,849.50
- 2) Benefits to County Roads = \$3,010.00
- 3) Benefits to Township Roads = \$4,137.00
- 4) Benefits to State Roads = \$3,507.00
- 5) Benefits to City of Freeport = \$6,531.00
- 6) Outlet Benefits to County Ditch #15 = \$14,700.00

**Grand Total Benefits = \$1,251,734.75**

### GRASS BUFFER STRIP

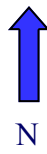
- 1) 26.31 ACRES (TILLABLE) @ \$2,000.00/AC. = \$52,620.00.
- 2) 55.11 ACRES (NON-TILLABLE) @ \$1,000.00/AC. = \$55,110.00.

**Total Damages for Grass Strip ROW = \$107,730.00**

### LEGEND

Contributing Area No. 1	County Ditch 15 Contributing Drainage Area
Contributing Area No. 2	County Ditch 26
Contributing Area No. 3	County Ditch 15
City of Freeport	Direct Benefits County Ditch 26

Map Source: BELMORE



Sheet 1 of 2

### Revisions

Date 1/27/2010

9/20/10—"Revised benefit total to reflect ROW changes"

Scale: 1" = 5,900'

9/23/10—"Revised benefits Sec 32 Oak & Sec 2 St. Martin"

SAUK RIVER WATERSHED DISTRICT  
 BENEFITING AREA MAP  
 STEARNS COUNTY DITCH 26 REDETERMINATION

PREPARED BY: **JB ASSOCIATES LIMITED, INC.**

**JBA**

P.O BOX 8, GARY, MN 56545  
 PHONE: 218-556-2521 EMAIL: JB@arvig.net